

## PRECISION GROUND IDLER SHAFTS

### IDLER SHAFTS INCLUDING SET COLLAR

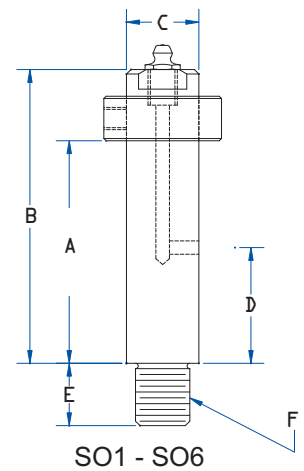
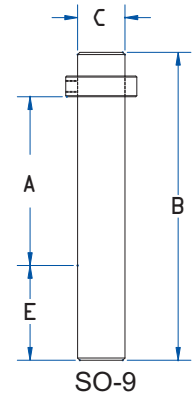
Brewer idler shafts are hardened and ground for maximum Idler life. To insure maximum rigidity, they are shouldered and threaded into units and locked with a set screw.

All Brewer idler shafts are interchangeable with all models, see Product Interchange

Part No.	A	B	C	D	E	F	For use with Model No.	App. Wt.
NO-2	1 1/8"	2 1/8"	1"	5/8"	7/8"	3/4" x 10 THD	AM-3/4"-10	0.75
NO-3	2 1/2"	3 1/8"	1"	1 1/8"	7/8"	3/4" x 10 THD	GM-3/4"-10	0.95
NO-4	3 1/2"	4 1/8"	1"	1 1/8"	7/8"	3/4" x 10 THD	RM-3/4"-10	1.16
NO-5	3 1/4"	4"	1 1/2"	1 1/8"	1 1/16"	1"-8 THD		2.62
NO-6	5 1/4"	6"	1 1/2"	2 1/2"	1 1/16"	1"-THD		3.62*

Part No.	A	B	C	D	E	F	For use with Model No.	App. Wt.
SO-1	1 1/16"	1 1/2"	1/2"	3/8"	7/16"	3/8"x16 THD	SS AS HS LS GS RS	0.16
SO-2	1 1/2"	2 1/8"	1"	5/8"	7/8"	3/4"x16 THD	SM AM HM LM GM RM TM XM	0.75
SO-3	2 1/2"	3 1/8"	1"	1 1/8"	7/8"	3/4"x16 THD	SM AM HM LM GM RM TM XM	0.95
SO-4	3 1/2"	4 1/8"	1"	1 1/8"	7/8"	3/4"x16 THD	SM AM HM LM GM RM TM XM	1.16
SO-5	3 1/4"	4"	1 1/2"	1 1/8"	1 1/16"	1"x14 THD	SL AL HL LL GL RL	2.62
SO-6	5 1/4"	6"	1 1/2"	2 1/2"	1 1/16"	1"x14 THD	SL AL HL LL GL RL	3.62
SO-9*	8"	13"	2"	---	4"	---	BB1 BB2 BB3 BB4	12.57

\*Available in made-to-order lengths. Ground but not hardened.



### MACHINED SHOULDER STUDS

Steel studs IS-165, IS-166, IS-167, IS-1662, IS-1663 and IS-1664 can be used with ball bearing and bronze bushed sprocket idlers in medium size tensioners where SO2, SO3 and SO4 shafts are used.

Part No.	A	B	C	D	E	F	G	H	I	J	Wt.l
IS-500	1"	1/2"	1/2"-13	1/2"-13	5/8"	1 1/2"	3/8"	1/4"	1 1/4"	2 1/2"	0.24
IS-625	1"	5/8"	1/2"-13	5/8"-11	13/16"	1 3/16"	1"	1/4"	1 1/8"	2 1/8"	0.36
IS-750	1 1/8"	3/4"	5/8"-11	3/4"-10	13/16"	1 1/8"	1 3/16"	3/8"	1 1/4"	2 5/8"	0.48
IS-165	1 1/8"	1/2"	3/4"-16	1/2"-13	5/8"	1 1/2"	7/8"	1/4"	1 1/4"	2 1/8"	0.28
IS-166	1 1/8"	5/8"	3/4"-16	5/8"-11	13/16"	1 3/16"	7/8"	1/4"	1 1/8"	2 1/8"	0.37
IS-167	1 1/8"	3/4"	3/4"-16	3/4"-10	13/16"	1 1/8"	7/8"	3/8"	1 1/4"	2 1/8"	0.48
IS-1662	1 1/8"	3/8"	3/4"-16	5/8"-11	13/16"	2 1/2"	7/8"	1/4"	2 1/4"	3 1/8"	0.58
IS-1663	1 1/8"	5/8"	3/4"-16	5/8"-11	13/16"	3 1/2"	7/8"	1/4"	3 3/4"	4 5/8"	0.66
IS-1664	1 1/8"	5/8"	3/4"-16	5/8"-11	13/16"	4 1/2"	7/8"	1/4"	4 3/4"	5 5/8"	0.75
IS-1665	1 3/16"	1"	1"-14	1"-14	1"	4 1/2"	1 3/8"	1/4"	5 1/2"	6 1/8"	1.65
IS-1666	1 5/16"	1"	1"-14	1"-14	1"	5 1/2"	1 5/8"	1/4"	6 1/4"	7 1/8"	1.95

\* Idler shaft & set collar not included in tensioner unit. Must be ordered separately.

